

## Cost Share Best Management Practices (BMPs)

Problems	Practice Code	Best Management Practice	Percent Cost-Share	Maximum Amount Cost-share Cap
Erosion, Nutrients	327	Conservation Cover	75%	Up to \$5,000
Erosion, Nutrients	340	Cover Crop	75%	Up to \$5,000 not to exceed \$45 per acre
Erosion	342	Critical Area Planting	75%	Up to \$5,000
Livestock	382	Fence	75%	Up to \$5,000
Erosion, Nutrients	386	Field Border	75%	Up to \$5,000
Erosion, Nutrients	393	Filter Strip	75%	Up to \$5,000
Erosion, Nutrients	512	Forage and Biomass Planting	75%	Up to \$5,000 not to exceed \$162/acre
Erosion, Nutrients	412	Grassed Waterways or Outlet	75%	Up to \$5,000
Livestock	561	Heavy Use Area Protection	75%	Up to \$5,000
Erosion	468	Lined Waterways or Outlet	75%	Up to \$5,000
Erosion	484	Mulching	75%	Up to \$5,000
Nutrients	590	Nutrient Management Plan	75%	Up to \$5,000
Livestock	516	Pipeline	75%	Up to \$5,000
Livestock	528	Prescribed Grazing	75%	Up to \$5,000
Erosion, Atrazine, Nutrients	391	Riparian Forest Buffer	75%	Up to \$10,000 not to exceed \$767/acre
Livestock	574	Spring Development	75%	Up to \$5,000
Erosion, Nutrients	612	Tree Shrub Establishment	75%	Up to \$5,000
Livestock	614	Watering Facility	75%	Up to \$5,000

## Cost-Share BMPs Legalities

*Not to exceed NRCS guidelines*  
*AFO must have a CNMP in place to be considered for Cost-Share. CAFO cannot be a part of the NPDES to be eligible for the Cost-Share Program.*

The maximum cap of Cost-share money that an individual can receive is \$10,000. If permits are required the landowner is required to pay the total permit fee.  
 Sales tax cannot be reimbursed or cost shared.

## Maintenance of Best Management Plans

The cost share recipient is responsible for maintaining the BMP after implementation. Vegetation and land management practices will be maintained for 5 years. Cover crops are maintained for only a year, but you can reapply for three years. Structural Practices will be maintained for 10 years. If the BMP was destroyed or damaged by extreme natural events (i.e., flooding, drought, lightning, etc.) it may be repaired or replaced with 319 funding during the 319 project grant term, if funds are available.

## What is not eligible for Cost-Share Funding?

1. Dredging, Drainage, or Flood Control
2. Work required by regulations or permits, such as NPDES Permit
3. Permit Fees of any type
4. Sales Tax
5. Incentive Payments
6. Land Payments
7. Equipment for individuals
8. Yield Losses

More information about BMP's and the Cost-Share Program

If interested or acquire more information go to [www.waynecountyswcd.org/](http://www.waynecountyswcd.org/) or call the Soil & Water Conservation District office at (765)966-0191 X3 (109)

## Introduction

A 319 Grant was awarded to the Wayne County Soil & Water Conservation District (SWCD), on October of 2014, to reduce non-point source water pollutants. The grant is responsible for funding the Whitewater River Initiative for Implementing Best Management Practices (BMP's) to generate better water quality in the West Fork of the Whitewater River Watershed.

## The Review Process

The cost share program will use the following review process:

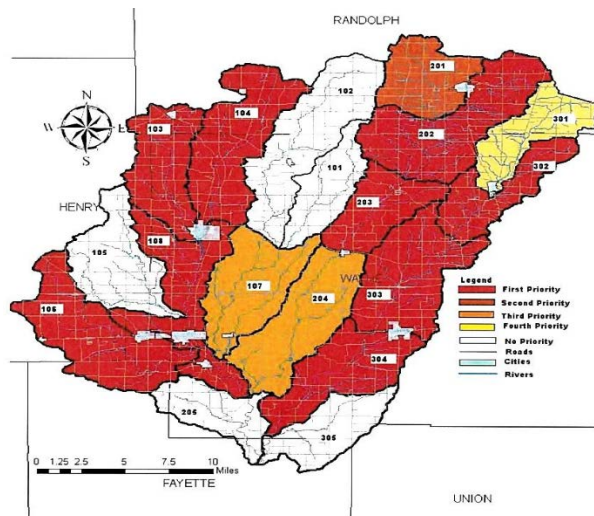
Watershed Coordinator and Wayne County Conservation Office technical staff will work with the landowner to complete the Eligibility Application and the Cost-Share Application.

The Watershed Coordinator receives application to ensure it is complete and eligible.

The Watershed Coordinator works with Technical Committee to prioritize applications. Applications will be rated according to the West Fork Cost-Share Ranking Sheet.

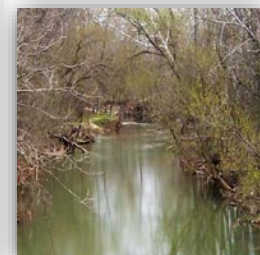
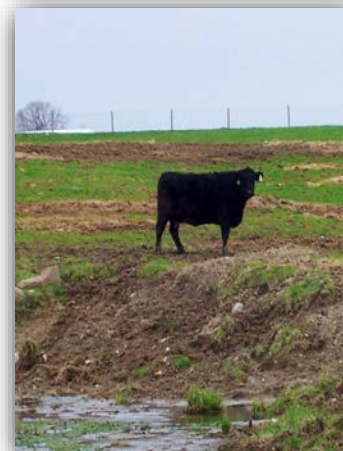
The Highest ranking projects will receive funds first.

Money will be awarded after the Best Management Practices are implemented.



Wayne County SWCD  
823 Round Barn Road  
Richmond, IN 47374

# The West Fork Watershed Cost-Share Program



Sponsored by:  
The Whitewater Watershed Initiative &  
Wayne County Soil and Water Conservation  
District